

# PUBLIC NOTICES

4131346-06/20/17

8 AM - 4 PM SPECIAL SERVICES	
Electric Outages.....	403.529.8260
Gas Emergency.....	403.529.8191
Water & Sewer Emergency.....	403.502.8042
After Hours Special Services .....	403.526.2828



## DEVELOPMENT PERMITS APPROVED MAY 11 TO MAY 17, 2017 PLANNING & DEVELOPMENT SERVICES

- RESIDENTIAL**
- 1254 ROSS STREET SE** (LOT 8, BLOCK 13, PLAN 481M) DP13836. Single Detached House.
- 370 VISTA DRIVE SE** (LOT 1, BLOCK 12, PLAN 0614000) DP13840. Single Detached House Including Revised Setback Variance For Interior Side Yard.
- 1214 ELM STREET SE** (LOT 19, BLOCK 17, PLAN 481M) DP13844. Garage.
- 120 SOMERSIDE WAY SE** (LOT 30, BLOCK 4, PLAN 0912931) DP13847. Garage (Shed).
- 621 SOMERSIDE VIEW SE** (LOT 8, BLOCK 13, PLAN 1411496) DP13851. Single Detached House With Secondary Suite Including Building Height Variance.
- 134 4 STREET SE** (LOT 16, BLOCK 54, PLAN 61685) DP13852. Single Detached House. Front Driveway Variance.
- 276 STERLING CRESCENT SE** (LOT 35, BLOCK 14, PLAN 1412603) DP13853. Single Detached House.
- COMMERCIAL**
- 3078 DUNMORE ROAD SE** (LOT 3, BLOCK 2, PLAN 8211223) DP13834. Two Fascia Signs.
- 2000 DIVISION AVENUE NW** (LOT, BLOCK, PLAN) DP13850. One Portable Sign.
- HOME OCCUPATION**
- 67 EWART CRESCENT SE** (LOT 35, BLOCK 5, PLAN 7910917) DP13823. Office Use Only. Computer Services.
- 41 HAMPTONS CLOSE SE** (LOT 5, BLOCK 4, PLAN 0710821) DP13826. Office Use Only. Consultant.
- 14 HAMPTONS CLOSE SE** (LOT 35, BLOCK 3, PLAN 0812177) DP13830. Office Use With Storage on Site. Online Sales.
- 363 BEAUFORT CRESCENT SW** (LOT 81, BLOCK 4, PLAN 8010927) DP13832. Office Use With Storage on Site. Consultant.
- 25 SCOTT COURT SE** (LOT 16, BLOCK 7, PLAN 9912452) DP13839. Office Use With Storage on Site. General Contractor.
- 981 ROSS GLEN DRIVE SE** (LOT 2, BLOCK 40, PLAN 8911867) DP13842. Customers To Attend Site. General. Logo & Decal Printing.
- 51 SUNSET DRIVE SW** (LOT 5, BLOCK 25, PLAN 0312828) DP13845. Office Use Only. Oilfield Services.



A person claiming to be affected by a decision of the Development Officer or the Municipal Planning Commission may appeal to the Medicine Hat Subdivision and Development Appeal Board by completing and submitting to the City Clerk Department, the required Notice of Appeal form within fourteen (14) days of this publication. Notice of Appeal forms are available from the City Clerk Department, Third Floor, City Hall or on the City's website at [www.medicinehat.ca](http://www.medicinehat.ca).

All Development Permits listed are subject to conditions. Further information on any Development Permit may be obtained from the Planning & Development Services Department, Second Floor, City Hall during normal business hours (Telephone 403-529-8374).

## 2017 DOWNTOWN PARKING PASSES

PARKING LOT	LOCATION	TYPE OF LOT	RATES (GST INCLUDED)
<b>CHOKECHERRY</b>	CORNER OF 2 STREET SE & 4 AVENUE SE	Gravel	<b>\$50/Month</b>
<b>COTTONWOOD</b>	CORNER OF 1 STREET SE & 5 AVENUE SE	Gravel	<b>\$50 Month</b>
<b>LINDEN</b>	ACROSS FROM CITY HALL ON 1 STREET SE	Paved	<b>\$50/Month</b>
<b>TRANSIT TERMINAL PARKADE</b>	CORNER OF 4 STREET SE & 6 AVENUE SE	2nd Level Covered with Plug-ins	<b>\$66/Month</b>
		3rd Level Uncovered	<b>\$50/month \$5/Day \$1/Hour</b>

Purchase your pass from the Cashiers on the main floor of City Hall, 580 – 1 Street SE. Parking Lot information line **403.529.8318**



**2017 CIVIC RECOGNITION AWARDS**

MEDICINE HAT CITY COUNCIL INVITES YOU TO JOIN IN ITS RECOGNITION OF THESE LOCAL RESIDENTS WHO HAVE MADE OUTSTANDING CONTRIBUTIONS TO THEIR COMMUNITY.

COMMUNITY SERVICE AWARD <b>Stan Sakamoto</b>	CULTURAL AWARD <b>Arne Handley</b>
ENVIRONMENTAL AWARD <b>John Slater</b>	HUMANITARIAN AWARD <b>Gerald Freedman</b>

THURSDAY, MAY 25, 2017  
AT THE ESPLANADE ARTS & HERITAGE CENTRE  
PRE-RECEPTION AT 6:00  
CEREMONY AT 7:00  
REFRESHMENTS TO FOLLOW

FOR MORE INFORMATION, CONTACT  
CORPORATE COMMUNICATIONS AT  
403.502.8719 OR [CORPCOMM@MEDICINEHAT.CA](mailto:CORPCOMM@MEDICINEHAT.CA)

## TRAIL CLOSURE IN POLICE POINT PARK DURING CONSTRUCTION OF NEW CRESCENT HEIGHTS LIFT STATION AND FORCEMAIN.

The Crescent Heights Lift Station project starting this spring involves the decommissioning and demolition of the existing lift station constructed in 1961, and construction of a new, replacement lift station to serve residents. For this work to be completed, a portion of trail along the north bank of the South Saskatchewan River will be closed until next spring. This closure is effective immediately to allow work to begin this week.

The Crescent Heights Lift Station is one of three major lift stations being upgraded by the City. The new lift stations are being constructed at higher elevation and will use submersible pumps and other flood-proofing measures to ensure it remains operational during potential future flood events. A new pipeline will also be installed from the new lift station to Police Point Park to support future development.

Signs have been posted along the trail to provide notice to frequent users. In addition, there is a display in the Police Point Park Interpretive Centre describing this important infrastructure project. The portion of the trail that is closed will be an active construction site. It will be used by construction vehicles and traffic and will contain open excavations and other hazards. It is therefore important that residents obey all trail closure and construct signs for their safety.

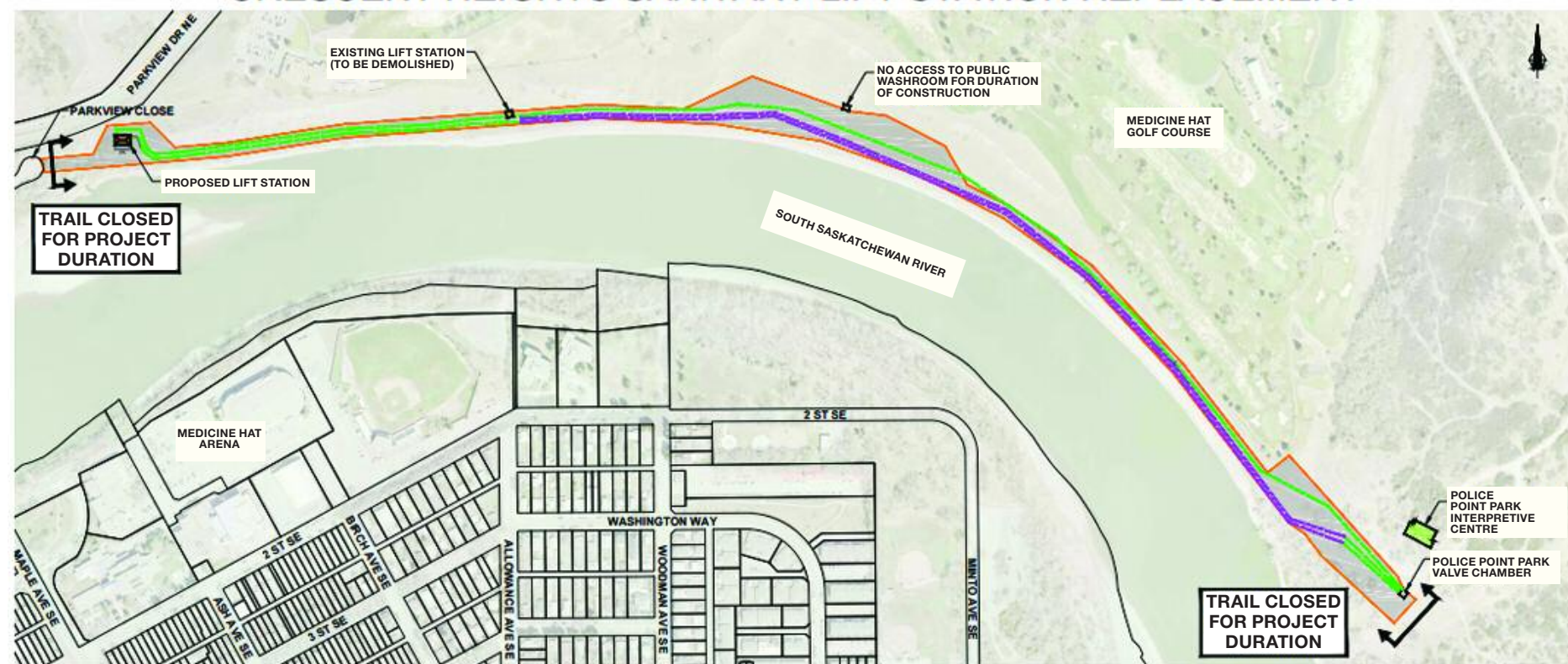
All residents and businesses directly affected by construction are being notified directly and any interruptions to water and sanitary services will be coordinated with residents. During construction there will be occasional noise and vibration which will be minimized as much as possible.

Thank you to everyone for your understanding and patience as this work is carried out for the coming year.

For more information please contact:

Evan Laturnas City of Medicine Hat - Environmental Utilities Department 403-529-8176

## CITY OF MEDICINE HAT ENVIRONMENTAL UTILITIES CRESCENT HEIGHTS SANITARY LIFT STATION REPLACEMENT



[www.medicinehat.ca](http://www.medicinehat.ca)