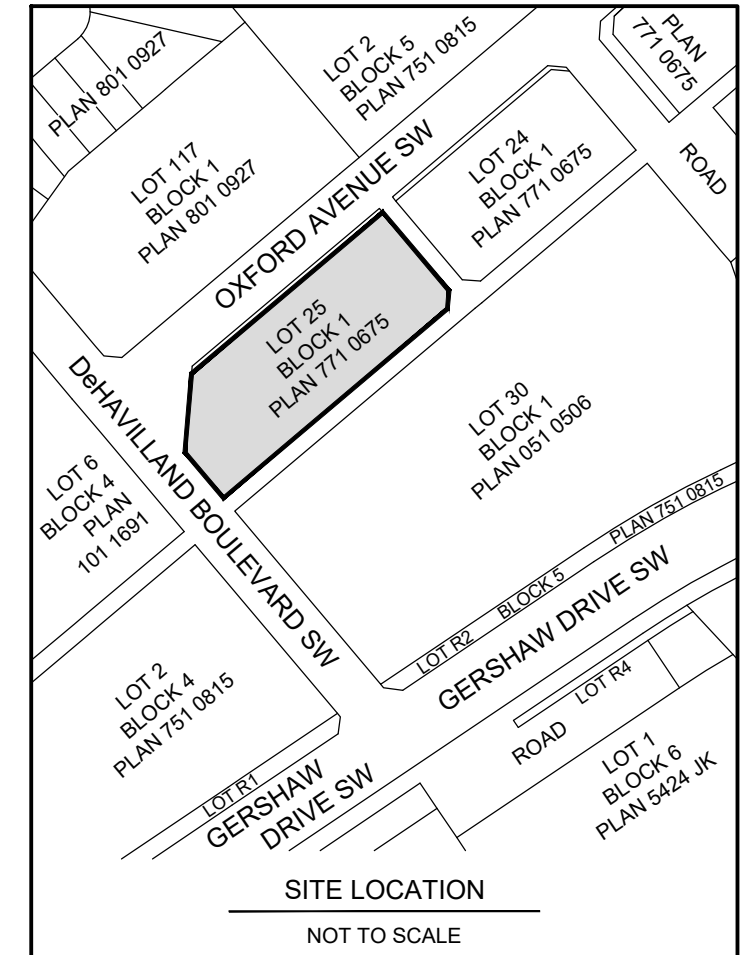


#1583 OXFORD AVENUE SW
LOT 25, BLOCK 1, PLAN 771 0675



LEGEND:

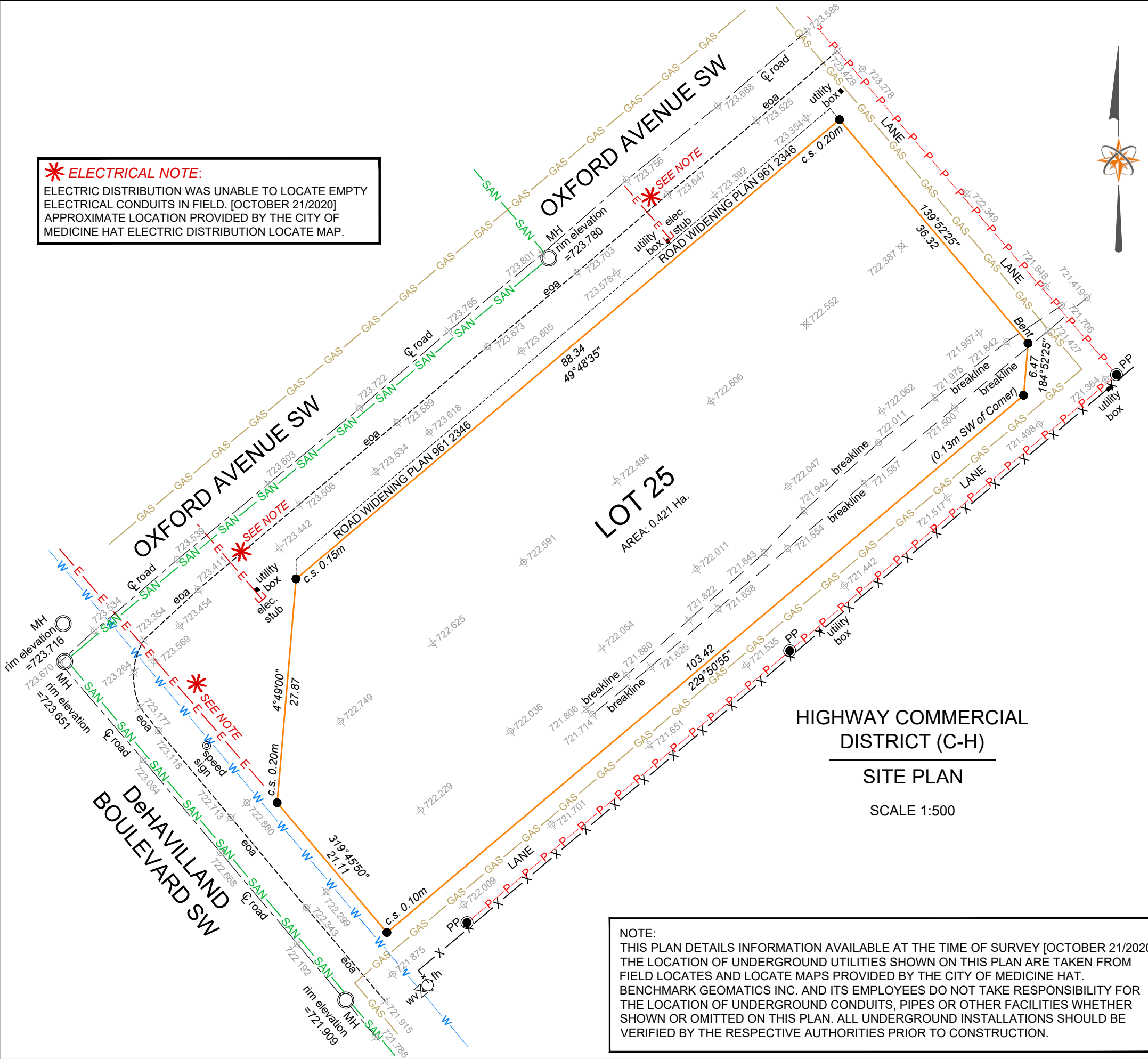
EOA	EDGE OF ASPHALT	fh	FIRE HYDRANT
℄	CENTRELINE	MH	MANHOLE
—	SITE LIMITS	SAN	SANITARY LINE
—W—	WATER LINE	GAS	GAS LINE
—E—E—	ELECTRICAL LINE	PP	POWER POLE
—P—P—P—	OVERHEAD POWER LINE	●	FOUND STATUARY IRON POST
—x—x—	FENCE		

NOTES:

- FOR SETBACK INFORMATION PLEASE REFER TO THE CITY OF MEDICINE HAT LAND USE BYLAW.

ALL DISTANCES AND ELEVATIONS ARE IN METRES AND DECIMALS THEREOF.
ELEVATIONS ARE GEODETIC AND ARE DERIVED FROM ALBERTA SURVEY CONTROL MARKER 162669.

*** ELECTRICAL NOTE:**
ELECTRIC DISTRIBUTION WAS UNABLE TO LOCATE EMPTY ELECTRICAL CONDUITS IN FIELD. [OCTOBER 21/2020] APPROXIMATE LOCATION PROVIDED BY THE CITY OF MEDICINE HAT ELECTRIC DISTRIBUTION LOCATE MAP.



HIGHWAY COMMERCIAL DISTRICT (C-H)
SITE PLAN
SCALE 1:500

NOTE:
THIS PLAN DETAILS INFORMATION AVAILABLE AT THE TIME OF SURVEY [OCTOBER 21/2020] THE LOCATION OF UNDERGROUND UTILITIES SHOWN ON THIS PLAN ARE TAKEN FROM FIELD LOCATES AND LOCATE MAPS PROVIDED BY THE CITY OF MEDICINE HAT. BENCHMARK GEOMATICS INC. AND ITS EMPLOYEES DO NOT TAKE RESPONSIBILITY FOR THE LOCATION OF UNDERGROUND CONDUITS, PIPES OR OTHER FACILITIES WHETHER SHOWN OR OMITTED ON THIS PLAN. ALL UNDERGROUND INSTALLATIONS SHOULD BE VERIFIED BY THE RESPECTIVE AUTHORITIES PRIOR TO CONSTRUCTION.