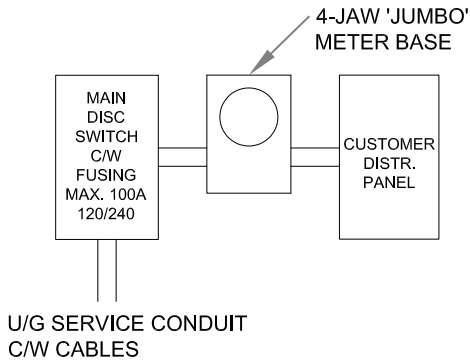
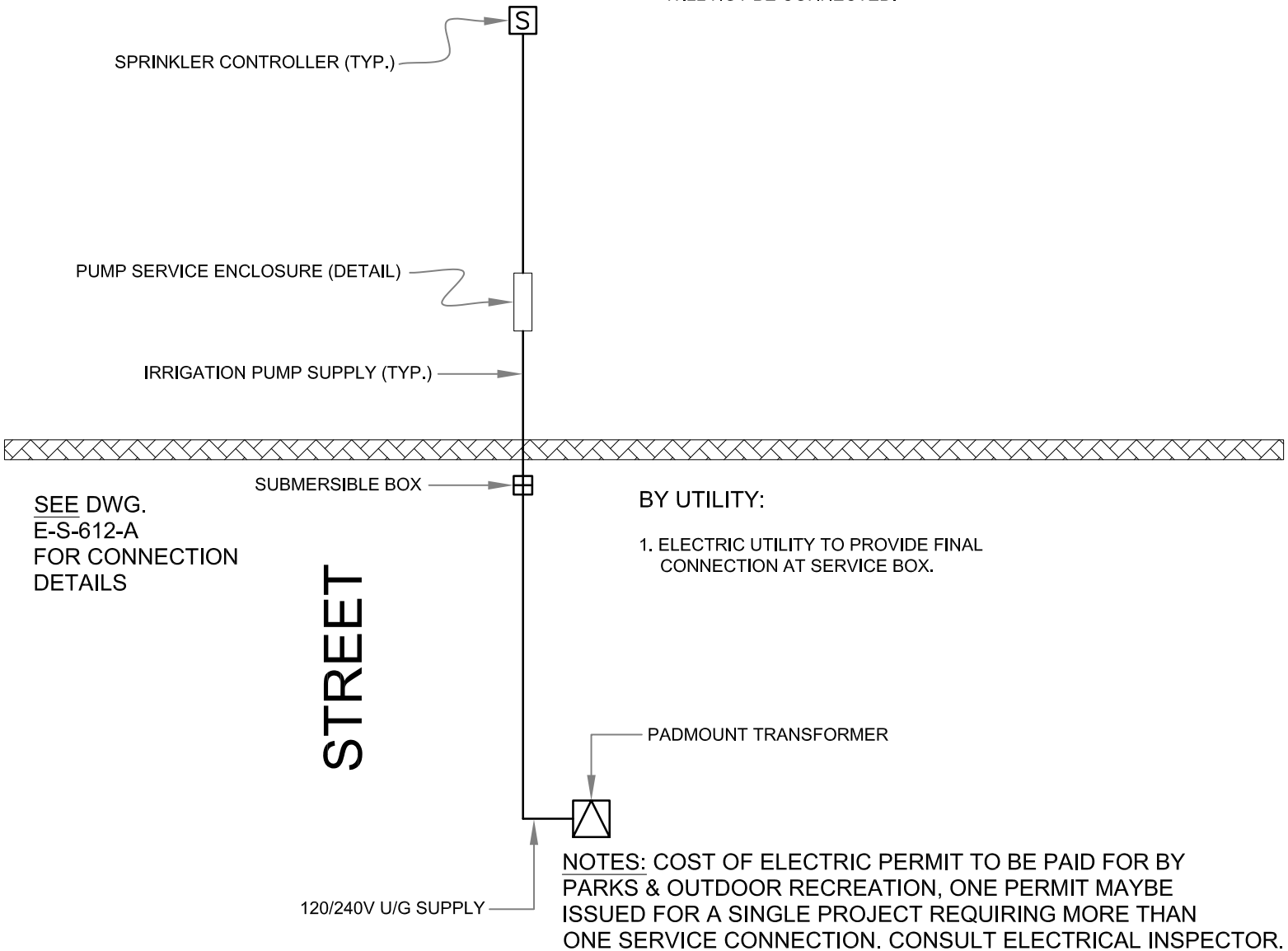


**METERING DETAIL**  
N.T.S.



**BY CONTRACTOR:**

1. CONTRACTOR IS RESPONSIBLE FOR TRENCHING, INSTALLATION OF MAIN SERVICE EQUIPMENT, ELECTRIC SERVICE CABLE & CONNECTION AT CONTROLLER
2. CONTRACTOR TO CO-ORDINATE INSTALLATION & FINAL CONNECTION AT SERVICE BOX WITH THE ELECTRIC UTILITY
3. SUPPLY CONDUCTORS FROM UTILITY SERVICE BOX TO BE BURIED 1.0m BELOW FINAL GRADE.
4. CONDUCTORS CAN BE DIRECT BURIED IF USING NMW CABLE OR OTHER TYPE OF CONDUCTOR SUITABLE FOR DIRECT BURIAL.
5. SUPPLY CONDUCTORS TO INCLUDE 3 INSULATED CONDUCTORS. A GROUND CONDUCTOR IS NOT REQUIRED AND IF SUPPLIED WILL NOT BE CONNECTED.



**BY UTILITY:**

1. ELECTRIC UTILITY TO PROVIDE FINAL CONNECTION AT SERVICE BOX.

NOTES: COST OF ELECTRIC PERMIT TO BE PAID FOR BY PARKS & OUTDOOR RECREATION, ONE PERMIT MAYBE ISSUED FOR A SINGLE PROJECT REQUIRING MORE THAN ONE SERVICE CONNECTION. CONSULT ELECTRICAL INSPECTOR.

		DATE:	June 6, 2016	<b>PARKS &amp; RECREATION</b> 	TITLE:	<b>METERED U/G IRRIGATION PUMP ELECTRICAL SERVICE</b>
		SCALE:	N.T.S.		DWG No.: <b>E.S.611.A</b>	
		DRAWN:	T.R.			
16	06	06	Edited measurements for imperial	AB	APPROVED: M.M.	
No	YY	MM	DD	REVISION DESCRIPTION		BY