

Important Reminders

Taxes are due on or before **June 30, 2025**.

A **penalty of 8.5%** will be added to any unpaid balance by the end of day June 30, 2025 and an additional **1.2% each month thereafter** until December 2025.

Your property tax bill covers the period of January 1 to December 31.

If you are currently enrolled in the Tax Instalment Payment Plan (TIPP), no additional payment is required at this time.

If you wish to start monthly payments under TIPP please apply at **Customer Care** on the main floor at City Hall **before June 30** or visit [medicinehat.ca/tipp](https://www.medicinehat.ca/tipp). An initial payment equal to the total of the missed instalment of the current year plus a **late filing fee of 2% of the initial payment** will be required at the time of the application. Applicants will need to provide a void cheque or direct deposit form for the monthly withdrawals.

You can pay your taxes through internet or telephone banking, at City Hall in person or via the 24-hour drop box, or by mail. **Please do not mail or place cash in the drop box.**

For a fee, you can pay by credit card online at [medicinehat.ca/taxpayments](https://www.medicinehat.ca/taxpayments).

eTax is a **free secure online portal** which allows property owners to switch to paperless billing, access property tax account details, including current and historical balances, transactions, and annual notices. Sign up at [medicinehat.ca/etax](https://www.medicinehat.ca/etax) with the access code and tax roll account number printed on your tax notice.

Unable to pay your taxes? Please contact collections@medicinehat.ca to sign up for the Tax Arrears Payment Plan (TAPP) or discuss repayment options available.

CITY OF MEDICINE HAT Customer Care & Billing

580 First Street SE
Medicine Hat, AB T1A 8E6

Phone: 403-529-8111

Fax: 403-525-8696

E-mail: tax@medicinehat.ca



[medicinehat.ca/propertytax](https://www.medicinehat.ca/propertytax)

UNDERSTANDING YOUR 2025 Property Tax

Property taxes collected from residential and non-residential properties is one revenue source to pay for municipal services including police and fire protection, road maintenance, snow clearing, parks, swimming pools, public transit and infrastructure.



 **Medicine Hat**

05-2025

How is my tax bill calculated?

Each year, City Council approves the amount of expenditure required to support City services. These services are funded by various revenue sources such as investment income, sales of services/licenses, user fees and charges, permits, developer levies and government grants. The remaining amount is funded by property taxes and financial reserves.

Municipal property taxes are calculated using two factors:

- Current year's Municipal Budget tax revenue
- Medicine Hat's total market value assessment

These two factors are used to determine the tax rate which fairly distributes the costs of service among all Medicine Hat property owners.

What is the formula used to determine the municipal tax rate?

Total revenue required by the City of Medicine Hat from property taxes (Municipal Budget)



Total Market Value Assessment

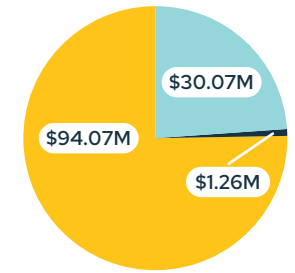
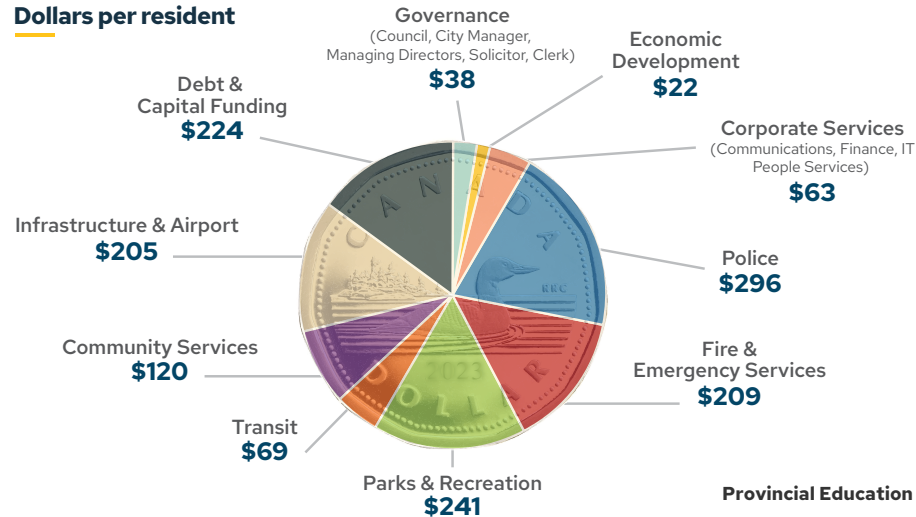
= Tax Rate



For more financial information, visit medicinehat.ca/reports.

Where do my tax dollars go?

Dollars per resident

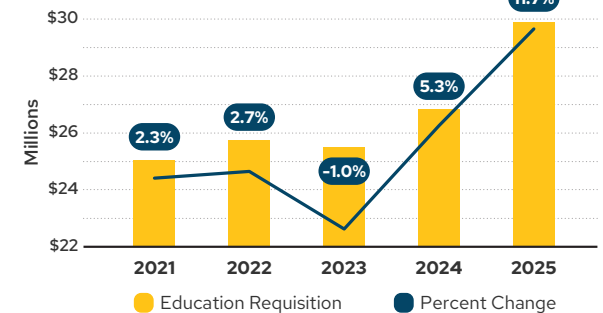


- Municipal Taxes
- Education Taxes
- Cypress View Foundation Levy

PROVINCIAL EDUCATION TAX

The Province of Alberta legislates the City to collect education tax on their behalf and display it as a separate line item on the tax notice. The Province determines the amount required and allocates this amount across all municipalities. The 2025 Alberta budget increased education tax revenue by \$400M which increased the education tax levy by 11.7% in Medicine Hat.

Provincial Education Requisitions for Medicine Hat Taxpayers



CYPRESS VIEW FOUNDATION LEVY

The Cypress View Foundation Levy is used to fund accommodations and operations for seniors at the Cypress View Foundation using requisitions collected annually from the City, the Town of Redcliff and Cypress County.

MUNICIPAL PROPERTY TAX

The City uses property taxes to assist in funding services such as Police and Fire Protection, road maintenance and snow clearing, parks and swimming pools, public transit and neighbourhood infrastructure.

What is the Seniors Property Tax Deferral Program?

This program allows eligible senior homeowners to defer all or part of their annual property tax through a low interest home equity loan with the Government of Alberta. Seniors wishing to take part in the program need to complete an application form by May 31 of the current year. Application forms & program details are available at government offices throughout the province, at Customer Care in City Hall and online at alberta.ca/seniors-property-tax-deferral-program.aspx.

How do I update my mailing address?

Contact the Alberta Land Titles Office at 403-297-6511 regarding any change of mailing address or fill out the online form at https://servicealberta.ca/pdf/ltmanual/CHANGE_OF_ADDRESS.pdf. Changes made to your land title are received electronically by the City of Medicine Hat from the Province of Alberta Land Titles Office.

How do I update my school declaration?

You can change your school declaration by contacting Customer Care at 403-529-8111 and online at medicinehat.ca/school. Any changes to your school support will not take effect until the next year.