

Fefferman Building

228 South Railway Street

Lot 21

Plan 1491

Block 14

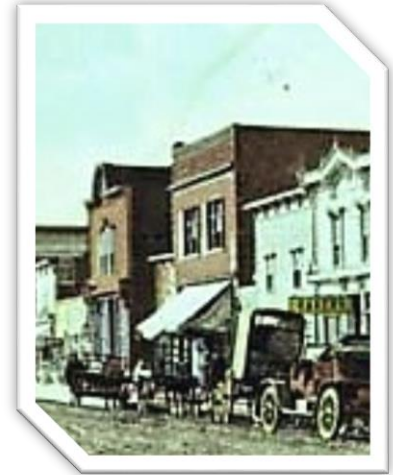
Date of Construction: 1917

Historical address is 226 South Railway Street

1913: E.C. Metzner Real Estate occupies the one-story building located between the historic 2-storey frame LB Cochran building (right) and the two-storey brick Montana Block/Royal Bowling Alleys (left).

At that time, the address for the building is #224 South Railway; the LB Cochran store (right) is #228, the Royal Bowling Alley is #218 and the Montana Block apartments (left) are #220.

0525.0294* 1910

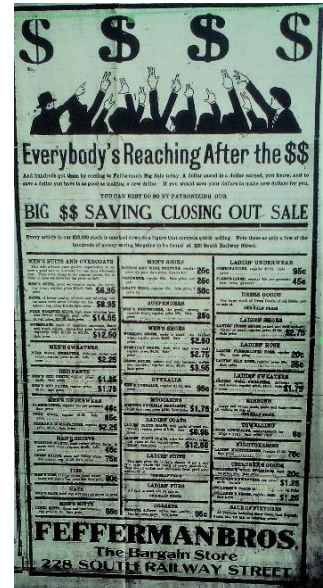


1914: The street names change in Medicine Hat. South Railway maintains its historical name but the addresses change. The building, now vacant, becomes #228, the former LB Cochran store is now #230, the Royal Bowling Alley is #220 and the Montana Block Apts. are #222. Henderson Directory lists the Fefferman Bros. Clothing at 619-3 St. S.E.

1915-16: By 1916, The Fefferman Bros. Clothing Store has relocated to 228 South Railway.

Jan. 11, 1917: Fefferman Brothers begin a hard-sell print media campaign that lasts for weeks. They announce they are "selling to quit business". According to the announcement, they had been in business for 6 years. The brothers, Sol and Morris also had separate individual businesses.

Feb. 14, 1917: "Fefferman Brothers" announced the store is coming down on March 1. It is likely that the neighbouring LB Cochran store which dated back to the 1880's was also demolished at the same time.





Harry operated The Hub on his own until the late 1940's at which time he took on partner William Klasky. Harry and Bill jointly managed The Hub until 1959.



Ad featured in the 1953 Farm Directory (logo on ad matches logo on photos)

0034.0039*



Right: Street view 0055.0936* 1953

After Fefferman's death in 1955, Klasky continued to operate the store in the same location. By 1960, Klasky had relocated The Hub to 656-3 St. S.E.

The Harry Fefferman Memorial Award for academic scholarships was funded from his estate in the late 1950's to the early 1960's.

Farmer Stockman Supply occupied the building from 1964-1973.*



*Prepared by Sally Sehn
Heritage Resources Committee
May 5, 2017
Sources: Esplanade Archives, Asst. archivist: Kim Unrau
Medicine Hat Public Library, Canada Census*

Fefferman Bldg. 2017

***Additional information and digital copies of photos may be available by contacting or visiting the Esplanade Archives.**