



# Medicine Hat Consumption Trends



## Electricity

<b>Total</b>	7,811 kWh/year
<b>Average</b>	651 kWh/month
<b>Peak Month</b>	August - 838 kWh



## Natural Gas

<b>Total</b>	102 GJ/year
<b>Average</b>	9 GJ/month
<b>Peak Month</b>	January - 20 GJ



## Water

<b>Total</b>	323 m <sup>3</sup> /year
<b>Average</b>	27 m <sup>3</sup> /month
<b>Peak Month</b>	August - 55 m <sup>3</sup>

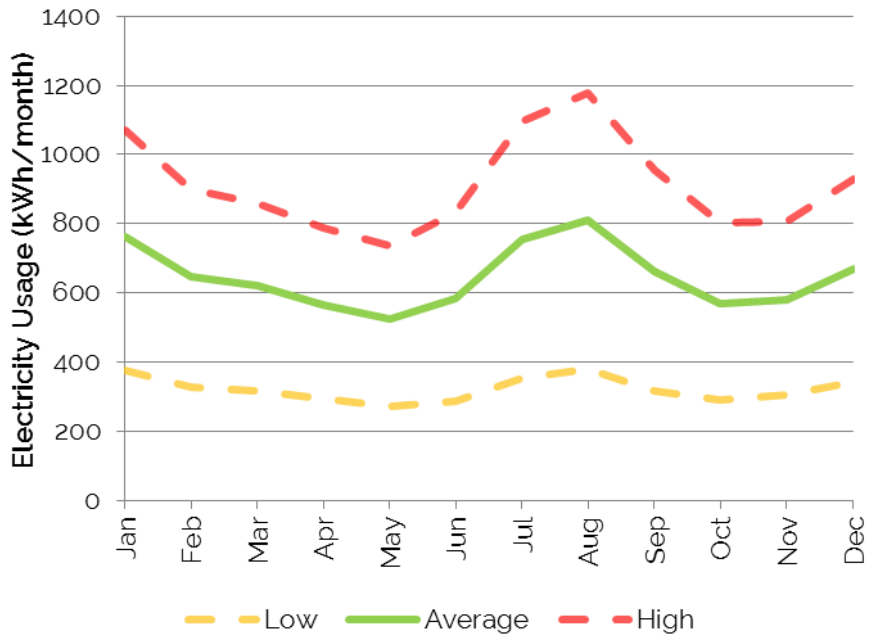




# Electricity Consumption

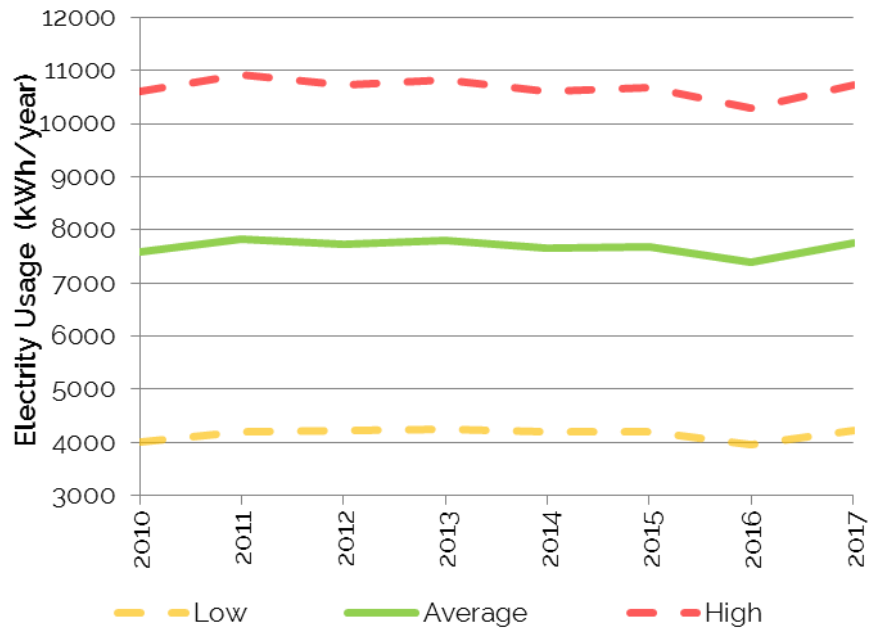
## Monthly Consumption Trend

- Average monthly usage of residential customers in Medicine Hat using 2010-2017 data.
- Usage is typically highest in the summer due to the increased use of air conditioners and in the winter due to increased use of indoor lights and heating demands.
- Usage is typically lowest in the spring and fall due to lower heating and cooling needs, as well as less need for lighting.



## Yearly Consumption Trend

- Annual consumption of residential customers from 2010-2017.
- Electricity usages saw a slight downward trend for an average household between 2011-2016, but consumption increased again in 2017.

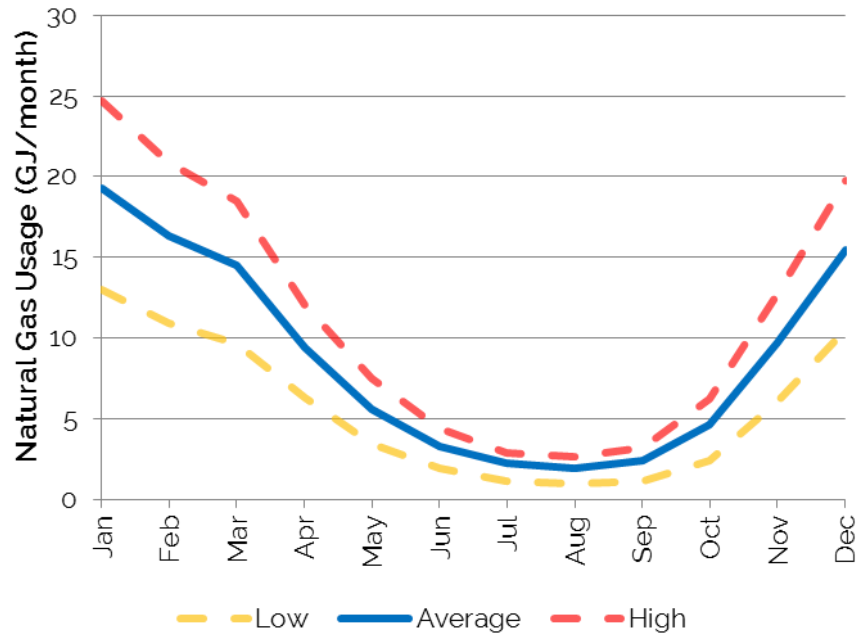


**High** - represents a home using more electricity than 80% of other homes  
**Average** - represents an average home in Medicine Hat  
**Low** - represents a home using less electricity than 80% of other homes

# Natural Gas Consumption

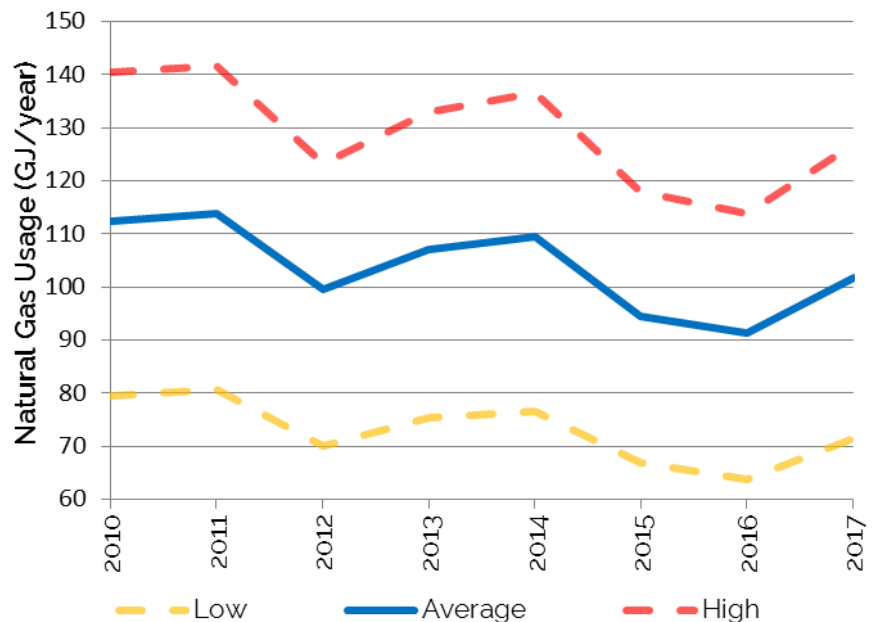
## Monthly Consumption Trend

- Average monthly usage of residential customers in Medicine Hat using 2010-2017 data.
- Usage is typically highest in the winter due to increased heating demands required to keep homes warm.
- Usage is typically lowest in the summer, when the primary demand is for heating water.



## Yearly Consumption Trend

- Annual consumption of residential customers from 2010-2017
- Natural gas usage is very weather dependent. For instance, a warm winter like 2016 results in lower usage, while a cold winter like 2017 will result in customers using more gas to keep their homes warm.



Medicine Hat  
The Gas City

**High** - represents a home using more natural gas than 80% of other homes

**Average** - represents an average home in Medicine Hat

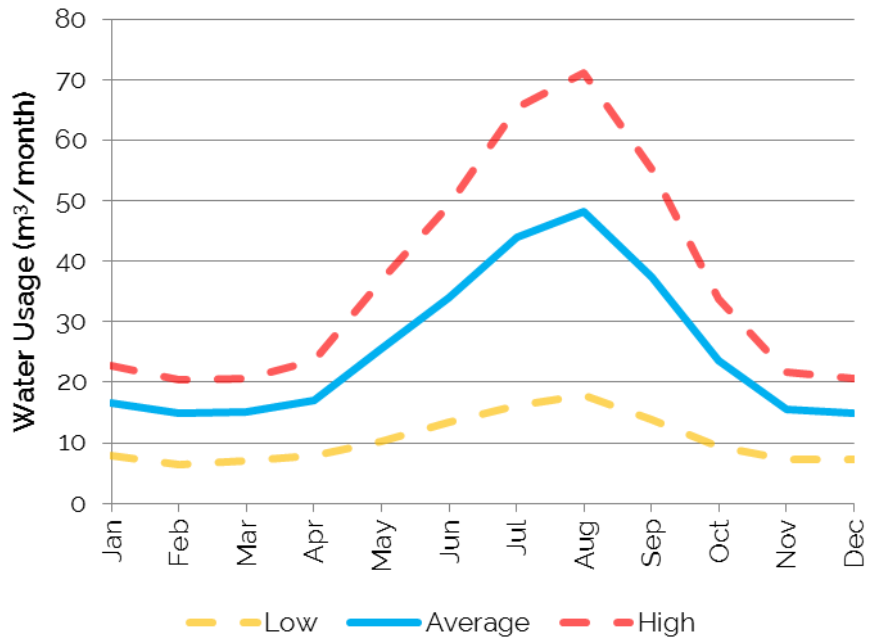
**Low** - represents a home using less natural gas than 80% of other homes



# Water Consumption

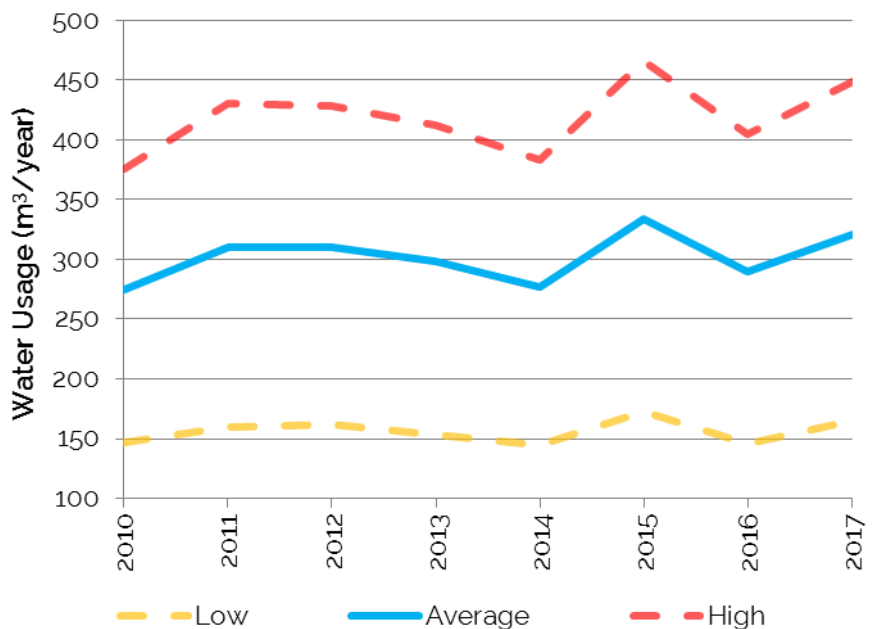
## Monthly Consumption Trend

- Average monthly usage of residential customers in Medicine Hat using 2010-2017 data.
- Usage is typically highest in the summer due to increased water use outdoors when watering lawns and gardens.
- Usage is typically lowest in the winter, when the primary demand is water being used indoors for toilets, showers, and washing machines.



## Yearly Consumption Trend

- Annual consumption of residential customers from 2010-2017
- Water usage is very weather dependent, particularly for high users. For instance, a dry summer like 2017 will result in many households using more water to keep their lawns green.



**High** - represents a home using more water than 80% of other homes  
**Average** - represents an average home in Medicine Hat  
**Low** - represents a home using less water than 80% of other homes