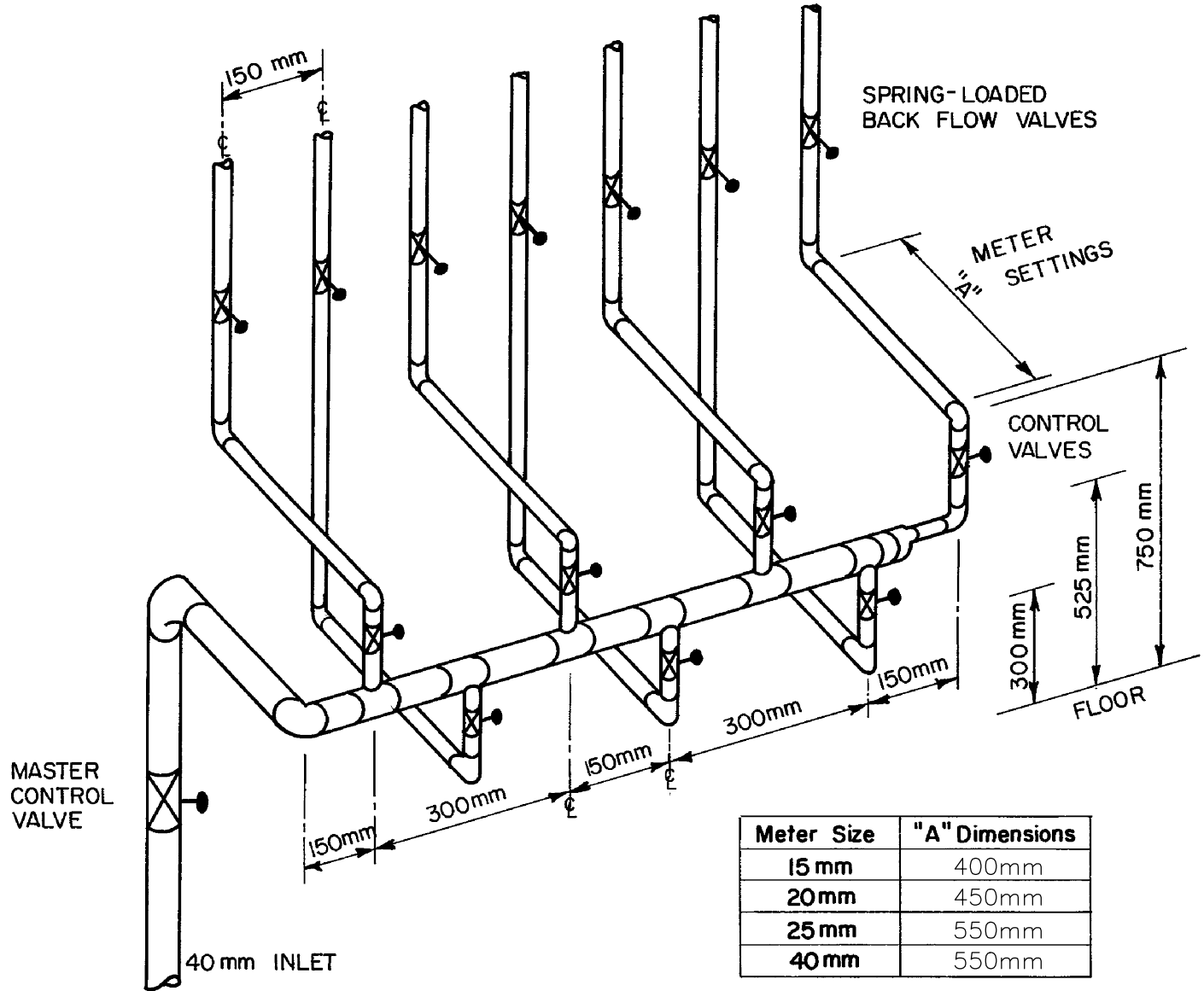



(C) MULTIPLE METER INSTALLATIONS FOR COMMERCIAL DEVELOPMENTS

FOR METER SIZES 40mm AND SMALLER (CASE 1)



- 1 Plumbers are requested to advise this office in advance regarding each individual installation , phone Environmental Utilities Office for details.
- 2 Master control valve to be optional
- 3 A Control valve and a spring-loaded back flow valve must be installed to each meter setting
- 4 For meters larger than 40mm, contact Environmental Utilities for further information

				DATE:	82/08/04	 Medicine Hat The Gas City Environmental Utilities	METER SETTING SPECS. MULTIPLE METERS CASE 1
				SCALE:	N.T.S.		
3	06	09	21	REVISED "A" DIMENSIONS	CGK RH		
2	02	03	22	CHANGED DWG NUMBER FROM EU-208	CGK		
1	01	01	23	HYBRID, GENERAL REVISION	CGK	DRAWN: M.J. APPROVED: SIEWAL. MAK.	DWG. No. EU-211
No.	YY	MM	DD	REVISION DESCRIPTION	BY	APP'D	