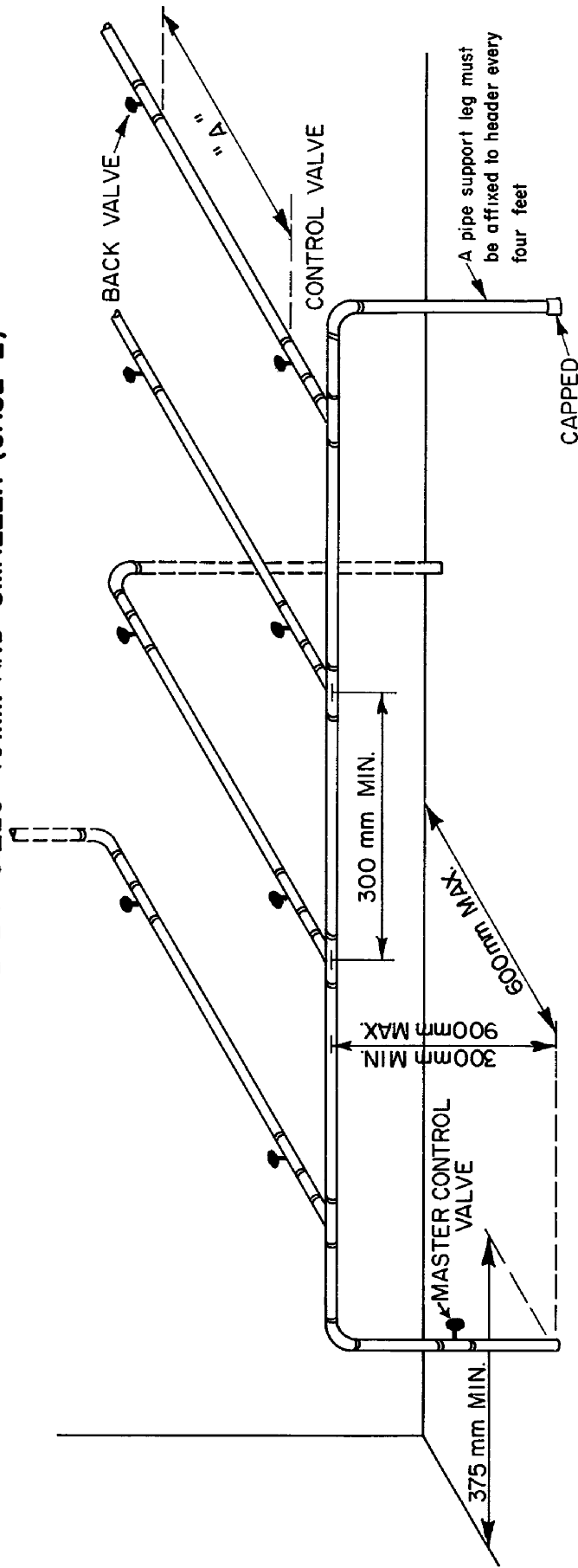


**(D) MULTIPLE METER INSTALLATIONS FOR
COMMERCIAL DEVELOPMENTS
FOR METER SIZES 40mm AND SMALLER (CASE 2)**



Meter size	"A" Dimensions
15 mm	400mm
20mm	450mm
25 mm	550mm
40mm	550mm

1. Plumbers are requested to advise this office in advance regarding each individual installation, phone Environmental Utilities Office for details.
2. Master control valve to be optional
3. A Control valve and a Back valve must be installed to each meter setting
4. For meters larger than 40mm, contact Environmental Utilities for further information

No.	YY	MM	DD	DATE	REVISION DESCRIPTION	BY	APP'D	DATE:	82/08/04
3	06	09	21		REVISED "A" DIMENSIONS	CGK	RH	SCALE:	N. T.S.
2	02	03	22		CHANGED DWG NUMBER FROM EU-209	CGK		DRAWN:	M. J.
1	01	01	23		HYBRID, GENERAL REVISION	CGK		APPROVED:	SIEWAL. MAK



Medicine Hat
The Gas City

Environmental Utilities

**METER SETTING SPECS.
MULTIPLE METERS
CASE 2**

DWG. No. EU-212