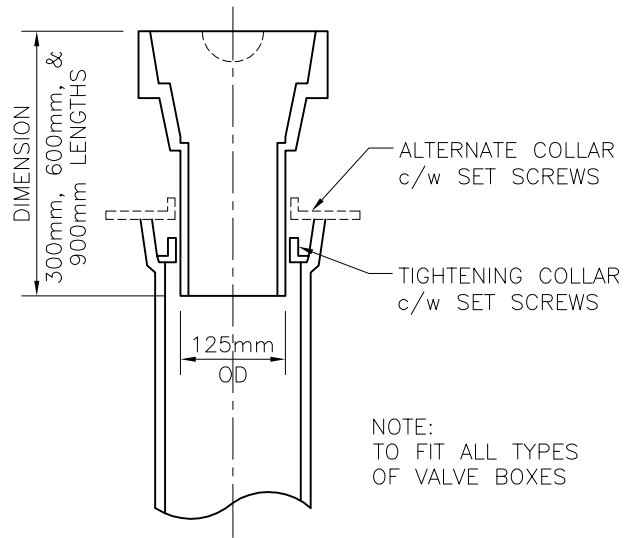


ALL MATERIALS CAST IRON UNLESS OTHERWISE NOTED. THE INTERIOR AND EXTERIOR OF THE TOP BOX CASING AND BOTTOM BOX SHALL BE FUSION-BONDED EPOXY COATED TO AWWA STANDARDS

FOR VALVES LARGER THAN 200mm; BOTTOM BOX DIMENSIONS TO BE APPROVED BY ENGINEER.

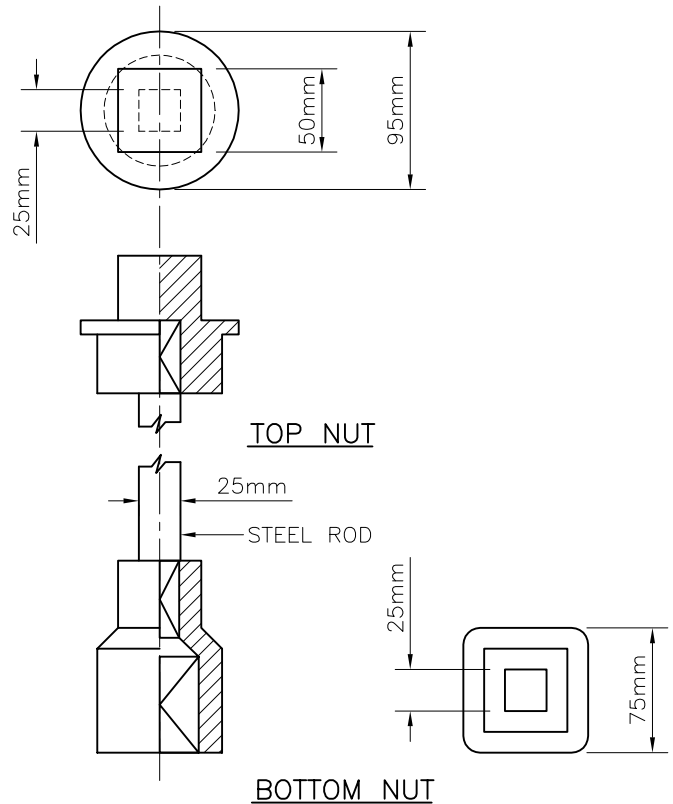
SLIDING TYPE VALVE BOX



TOP EXTENSION PIECE FOR VALVE BOX

FOR DETAILS SEE MCAVITY COMPLETE VALVE BOX NO. W6001

THE BOTTOM BOOT AS SHOWN ACCOMMODATES 100mm, 150mm & 200mm VALVES. THE VALVE BOX IS SUPPLIED WITH A LARGER BOOT FOR 250mm & 300mm VALVES.



TOP NUT

BOTTOM NUT

6	11	01	24	GENERAL REVISION	CGK	BG	DATE:	
5	10	12	16	REVISED DRAWING	PMD	BC		80/08/
4	07	05	28	REVISED NOTES	CGK	SP	SCALE:	N.T.S.
3	02	03	22	CHANGED DWG NUMBER FROM EU-202	CGK		DRAWN:	V.S.
2	01	02	09	CHANGED DEPTH TO TOP NUT	CGK		APPROVED:	SIEWAL. MAR.
1	01	01	25	HYBRID	CGK			
No.	YY	MM	DD	REVISION DESCRIPTION	BY	APP'D		



**Medicine Hat**  
The Gas City

Environmental Utilities

**STANDARD MAIN VALVE BOX DETAIL**

DWG. No.

**EU-204**