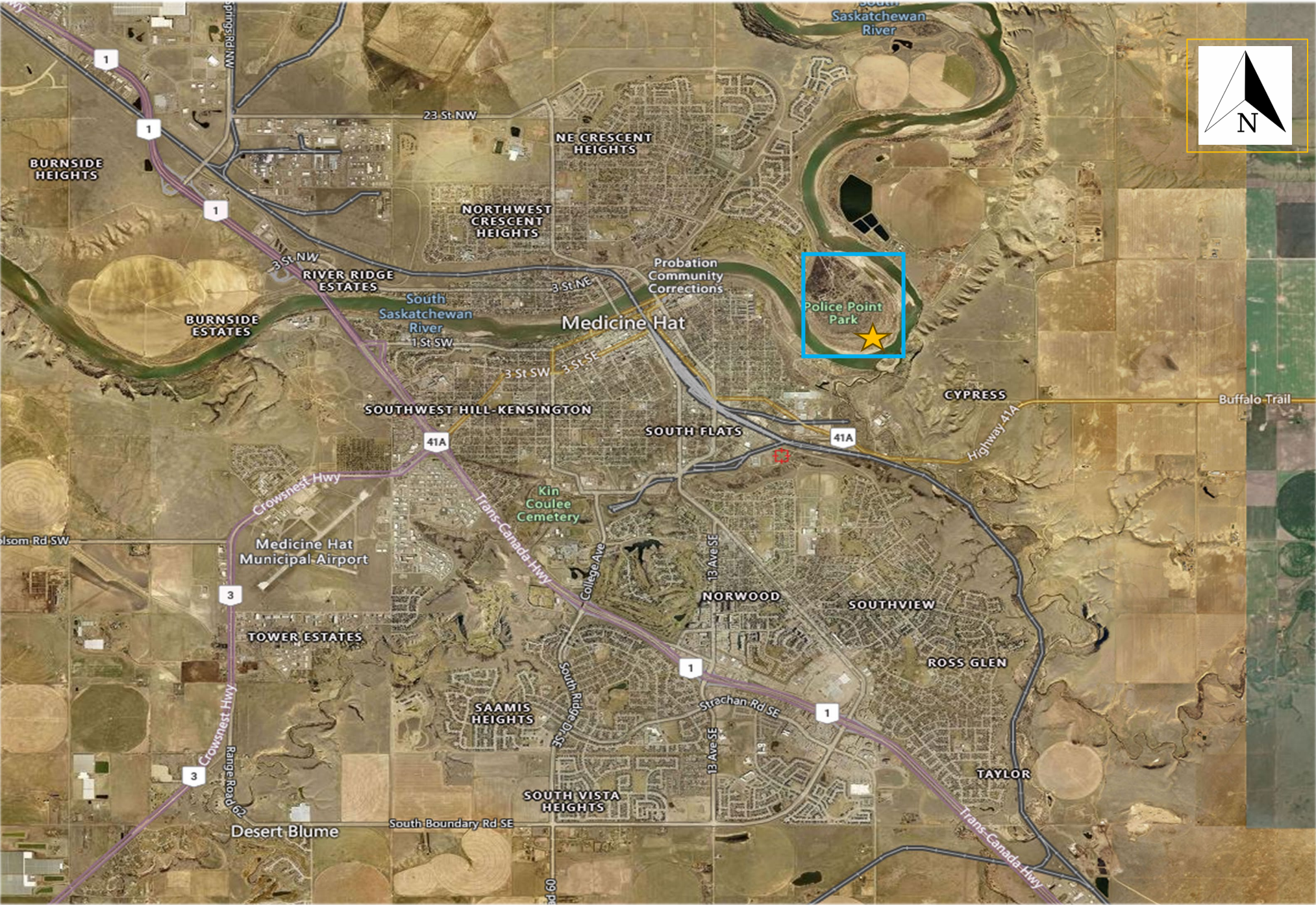


# Instructions

- Step 1: File/Save a new copy of the file for your Project.
- Step 2: Inserting image onto page
  - Right click on the image box
  - Click “Change Picture” and navigate to desired image
  - Formatting size of image boxes use 18.5cm for the height, width will vary.
- Step 3: Create Legend
  - If shapes or symbols are used, include them in the legend with a description of their meaning
  - Differentiate workspace or items by colour
- Step 4: Replace highlighted text underneath images
- Step 5: If applicable, bring north arrow to front of image by right clicking and selecting “bring to front”
- Step 6: Insert additional slides
  - Click “New Slide” on the tool bar
  - Click “Duplicate Selected Slide”
- Step 7: Once complete, PDF document by selecting: File – Save as Adobe PDF and submit with Proposal





Legend:



Extent of Workspace



Work Location

Enter Proposal Name

Enter Figure Name

Date:

Assumptions:

Figure:





Legend:



Extent of Workspace



Project Entrance and Muster Point

Enter Proposal Name

Enter Figure Name

Date:



Assumptions:

Figure:





Legend:

-  **Route to Acces**
-  **Project Location**

**Enter Proposal Name**

**Enter Figure Name**

**Date:**

**Assumptions:**

**Figure:**