

Highway 3 Twinning - East of Highway 885 (Whitla) to Medicine Hat - Preliminary Design

Project Introduction

- Alberta Transportation and Economic Corridors (TEC) has confirmed AECOM and ISL as consulting team partners to complete the design and construction administration for the twinning of Highway 3 from Whitla to Medicine Hat. This work will include expanding Highway 3 from 2 undivided lanes in each direction to 2 (4 total) divided lanes in each direction.
- The project will consider input from adjacent landowners and businesses, stakeholders including community groups, the City of Medicine Hat, County of Forty Mile, and Cypress County. First Nations consultation is ongoing.
- Interested Albertans can participate in a public information session on **September 10 or 11, 2024**, and the online comment form between **September 3-20, 2024**, to learn more about the project and provide feedback to inform the preliminary design.
- The twinning of Highway 3 will improve safety and efficiency along the corridor.

Highway 3 Twinning - East of Highway 885 (Whitla) to Medicine Hat - Preliminary Design

Preliminary Design Overview

Objectives:

- Safety of the traveling public
- Highway is developed, designed, and constructed in an environmentally responsible manner that meets or exceeds the Provincial standards
- Risks are identified and properly allocated
- Provide effective and efficient highway infrastructure

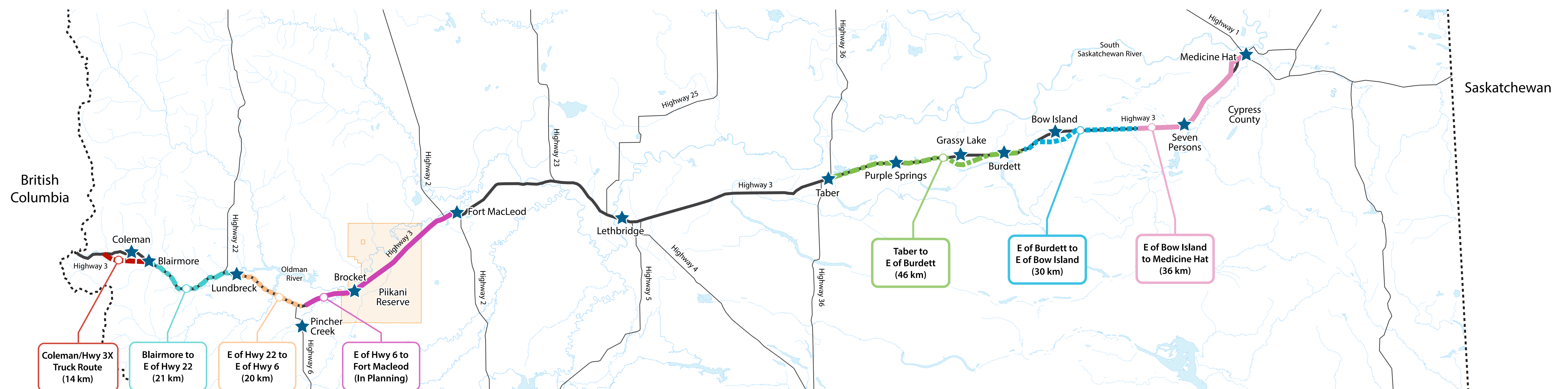
The following technical work is underway and will be completed in the preliminary design phase:

- Evaluate and update prior planning studies: roadway geometry, drainage, utilities, bridges, access management, land use changes, airport extension requirements, and landowner information
- Prepare design criteria
- Environmental field investigations
- Communications with area landowners, businesses and roadway users
- Information sessions with stakeholders and the public

Highway 3 Twinning - East of Highway 885 (Whitla) to Medicine Hat - Preliminary Design

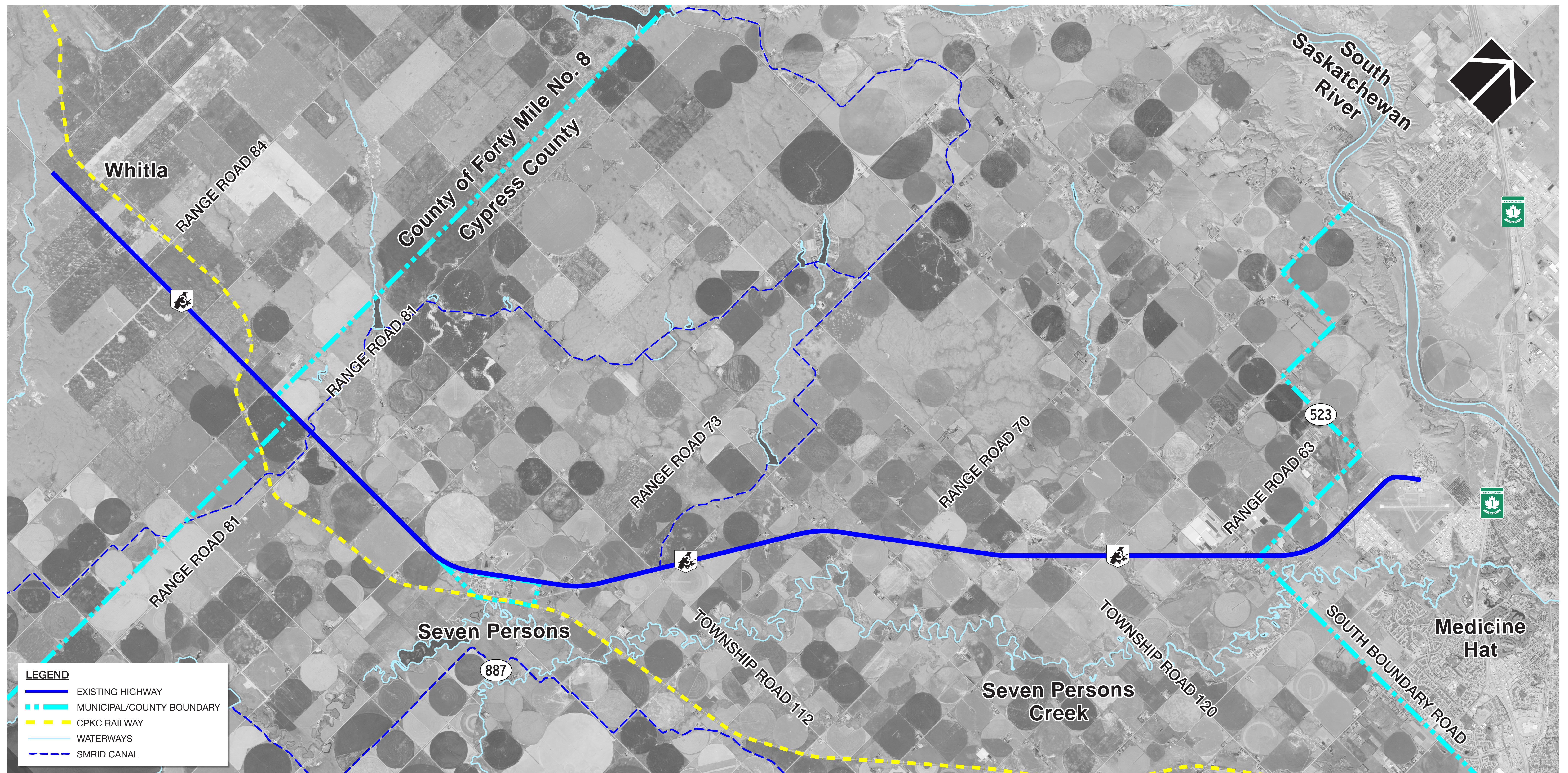
Highway 3 Corridor

- Highway 3 is one of Canada's primary highways, moving people, goods and services inter-provincially and internationally. The corridor provides a primary connection between southern Alberta to provinces east and west and is one of only three continuous east-west routes through Alberta.
- Several segments along Highway 3 have been funded for detailed design and construction, as noted below.
- This project will build on previous planning studies on the Highway 3 corridor between Highway 885 (Whitla) and Medicine Hat.



Highway 3 Twinning - East of Highway 885 (Whitla) to Medicine Hat - Preliminary Design

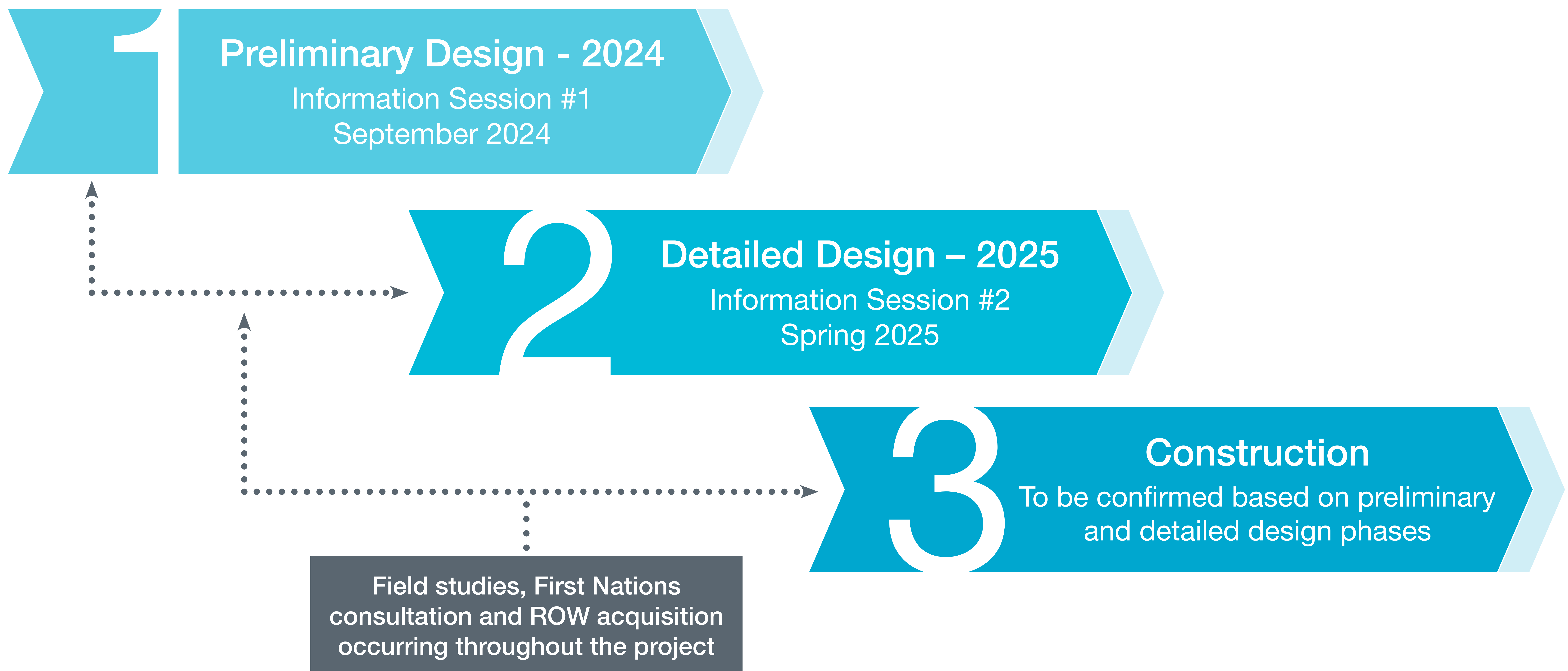
Project Area Map and Existing Condition



Classification: Public

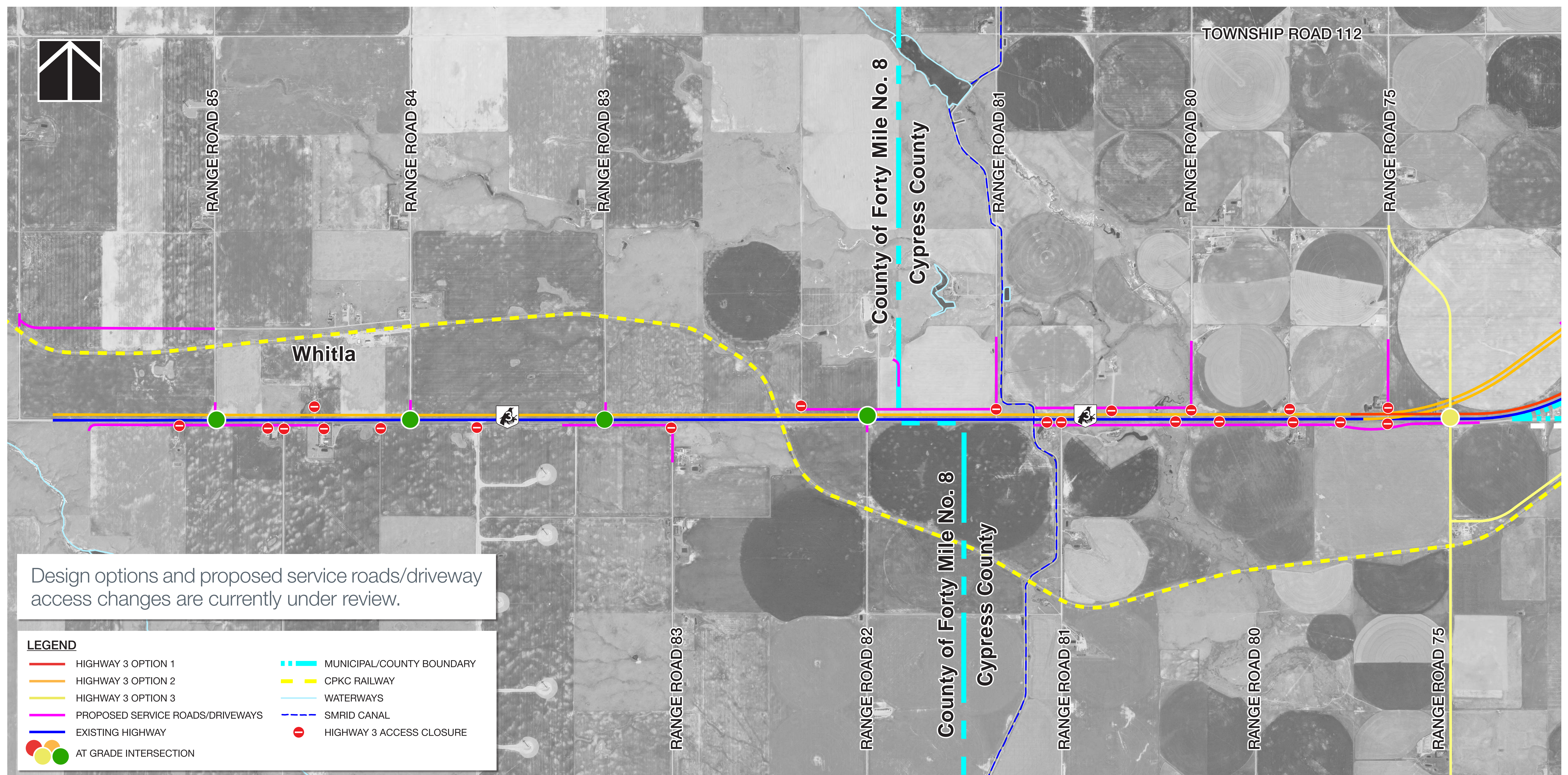
Highway 3 Twinning - East of Highway 885 (Whitla) to Medicine Hat - Preliminary Design

Project Schedule



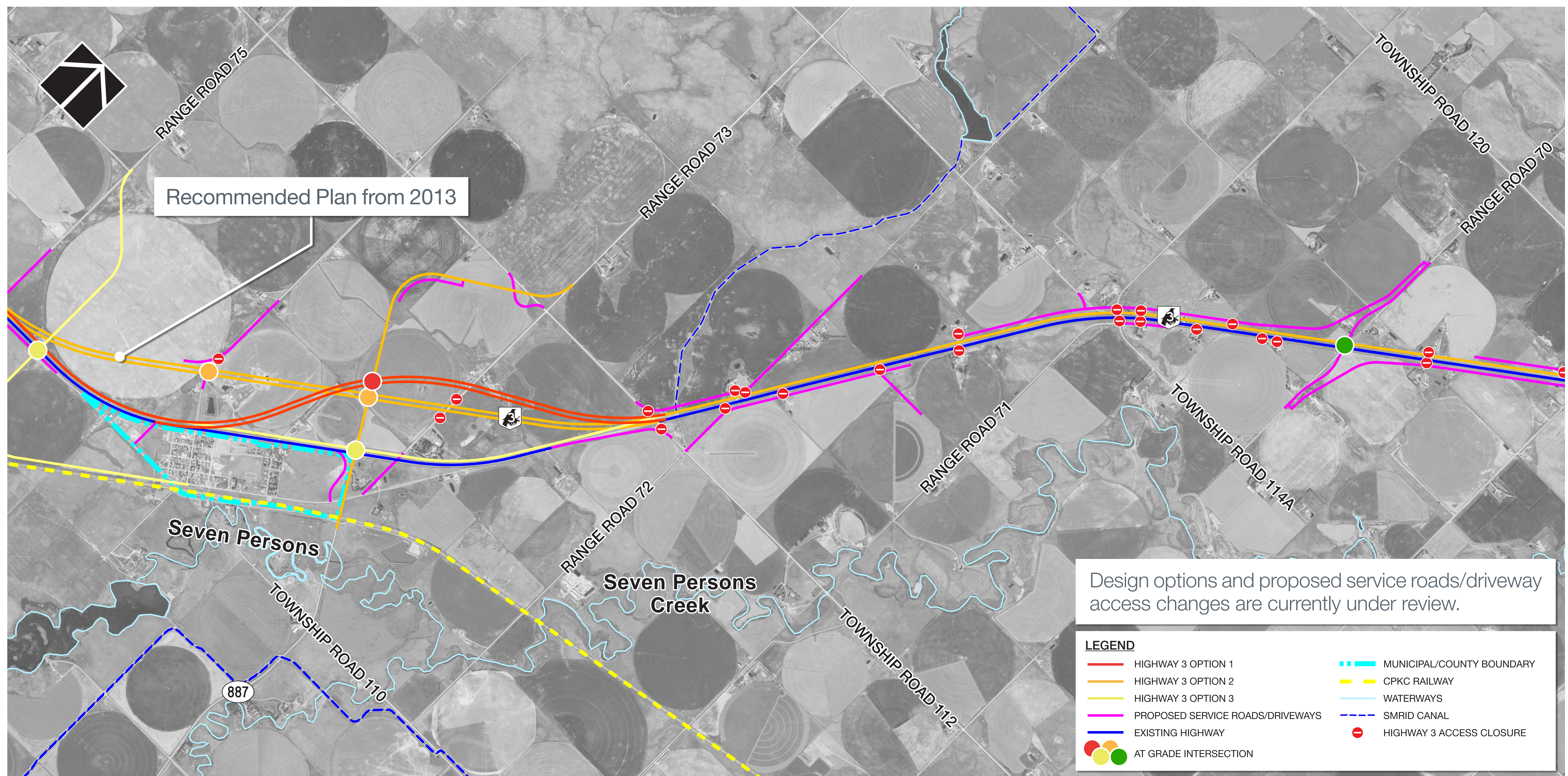
Highway 3 Twinning - East of Highway 885 (Whitla) to Medicine Hat - Preliminary Design

Design Options from Whitla to Seven Persons



Highway 3 Twinning - East of Highway 885 (Whitla) to Medicine Hat - Preliminary Design

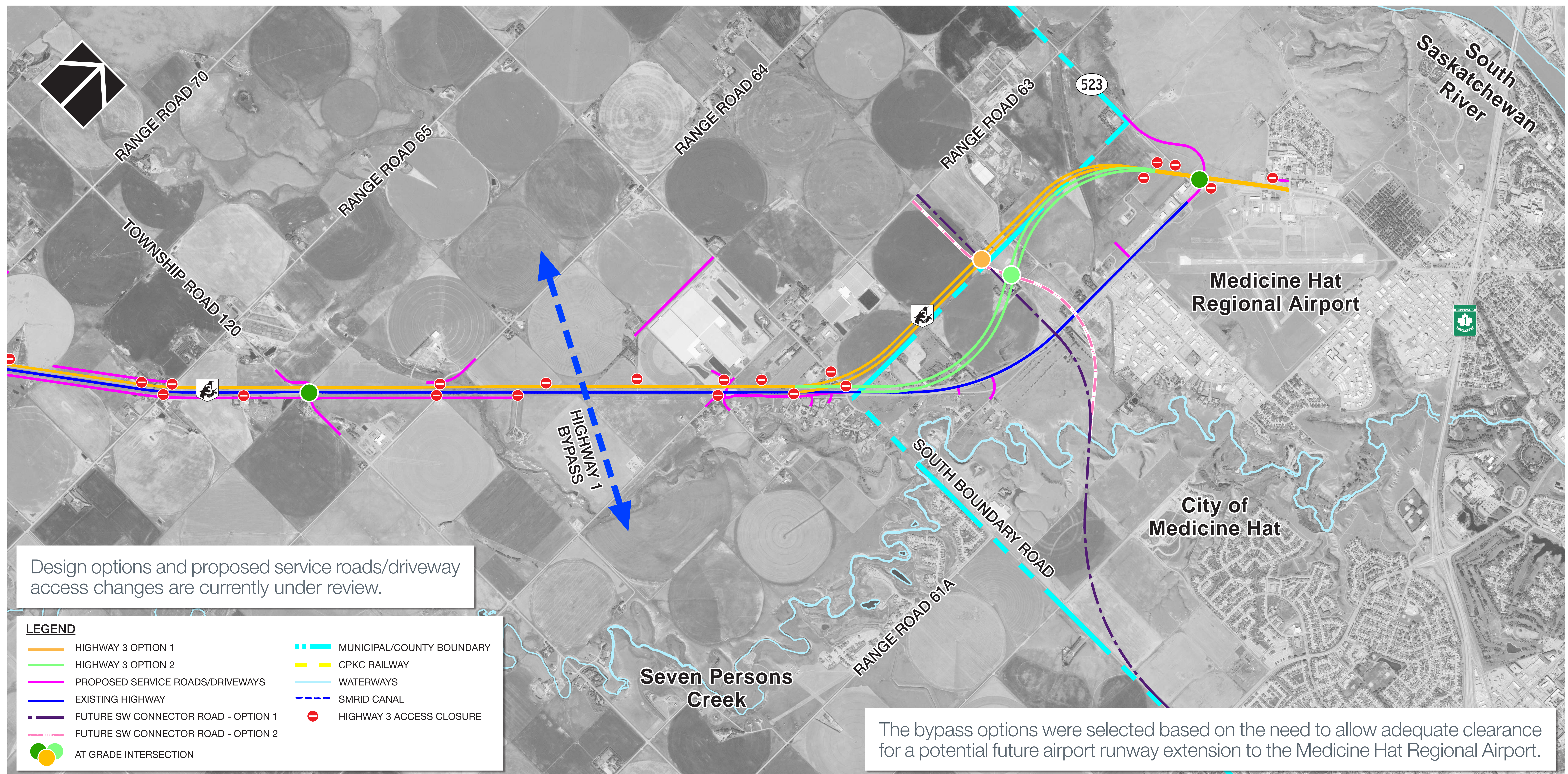
Design Options from Seven Persons to Range Road 70



Classification: Public

Highway 3 Twinning - East of Highway 885 (Whitla) to Medicine Hat - Preliminary Design

Design Options from Range Road 70 to Medicine Hat



Classification: Public

Highway 3 Twinning - East of Highway 885 (Whitla) to Medicine Hat - Preliminary Design

Share your comments!

- Do you have issues, concerns or information to share about the twinning of Highway 3 from Highway 885 (Whitla) to Medicine Hat?
- If so, please share your feedback with the project team by completing a paper copy or online version of the comment form. The display boards and survey are available here:
<https://www.alberta.ca/highway-3-twinning-east-of-highway-885-whitla-to-medicine-hat>

Next Steps

- Feedback received from stakeholders and the public in September 2024 will be used by the project team, along with technical and financial considerations, to finalize the preliminary design.
- Preliminary design will be completed in 2024.
- Detailed design will be completed in 2025 and shared with stakeholders and the public at a second information session.
- Construction schedule to be confirmed based on preliminary and detailed design.
- For more information and to stay up to date on the project, visit:
<https://www.alberta.ca/highway-3-twinning-east-of-highway-885-whitla-to-medicine-hat>