

City Bakery



Date of Construction	1911
Address	317 - 6 (Fourth) Avenue SE
Original Owner	William Cousins
Architect	William T. Williams
Contractor	Morton Fulton
Neighbourhood	Downtown
Legal	1491;23;1-3

Description of Historic Place

The City Bakery is situated mid-block on 6th Avenue SE between 3rd and 4th Streets SE in Medicine Hat's downtown commercial core. The two-storey brick commercial building possesses minimal setback from the street and is located adjacent and connected to other commercial buildings. The building is characterized by its stepped parapet with horizontal banding with central arch, quoining, and later substantial storefront canopy.

Heritage Value of Historic Place

The City Bakery block, built in 1911, is valued as a component of Medicine Hat's pre-First World War downtown development. Medicine Hat's first downtown expansion had started in 1883 with the arrival of the railway. The initial settlement and growth of Medicine Hat was based around the positioning of the railway yards and stations, and early commercial buildings were constructed along North and South Railway and adjacent streets. The second wave of downtown development occurred in

the pre-First World War period. The City Bakery building was a component of a later period of economic prosperity during the early 1910s, which extended the downtown commercial core to the west. Over its lifetime, the City Bakery block has housed a wide range of business including the Oil & Stock Exchange, real estate offices, a grocery, a beauty salon, and its most recognized association, a bakery.

The City Bakery block is further valued for its connection with early Medicine Hat pioneer William Cousins, who owned and developed the commercial block. William Cousins arrived in Medicine Hat via a 'prairie schooner' in May of 1883 - just prior to the arrival of the railway. Originally from London, Ontario, Cousins travelled west in early 1880s, settling first in Winnipeg in 1882. Recognizing the potential business opportunity of the burgeoning railway townsite, Cousins took the railway to Regina, purchased merchandise, horses and wagons, and travelled to Medicine Hat entering the then tent town via the South Saskatchewan Valley by way of Porter's Hill. He established his first business, a mercantile store, in a tent in what

is now Riverside Park and provided goods and merchandise to railway workers, their families, and early settlers. The following year he married Jessie Thornton and settled at 271 First Street. William Cousins was a shrewd businessman, frequently looking for ways to improve his financial position, such as investing in ranching and real estate. Cousins owned the entire lot the City Bakery is situated on, which also included the Dreamland Block Theatre and Union Bank. He bought and sold the lot twice during his lifetime making a sizeable profit each time - a practice the astute businessman would repeat numerous times over during Medicine Hat's early development. Cousins was also a civically minded man, and was instrumental in the development of the 'The Medicine Hat News', was a founder of the Medicine Hat Agricultural Society, a co-founder of the Cypress Club, a member of the inaugural Hospital Board and Board of Trade, Town Mayor, as well as the first Clerk of the Supreme Court of the North West Territories.

The City Bakery block holds further value as a representation of Medicine Hat Edwardian era Classical Revival-style architecture. Designed by prominent local architect William T.

Williams and built by M. Fulkan for \$5,000, the two-storey brick building reflects many of the characteristics of this architectural style, including its full-height storefront with wood cornice, stepped parapet, brick cornice with central arch, and brick quoining. The foundation of this architectural style is rooted in the period's increased understanding of Greek and Roman building construction, and the style is frequently found in buildings dating to the first decades of the 20th century.

City Bakery, flanked by the historic Union Bank building on the left, and the Dreamland/Roxy Theatre on the right, circa 1920

Esplanade Archives, Medicine Hat, Alberta.
0034.0017.



Character-Defining Elements - City Bakery (317 - 6 Avenue SE)



- Location mid-block on the west side of 6th Avenue SE in the commercial core of Medicine Hat, with minimal set back from the street



- Proximity to other commercial buildings of a similar age and construction



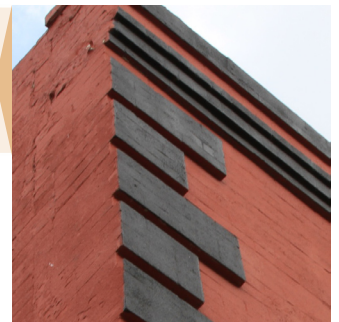
- Form, scale, and massing as expressed by its: two-storey height, rectangular form, flat roof with stepped parapet



- Masonry construction including: concrete foundation, pressed red brick with tooled grey mortar joints



- Classical Revival-style details such as: simplicity of form; stepped parapet capped with parged brick; quoining; second storey cornice with arched banding; wood storefront cornice



- Fenestration including the original second storey window openings

Statement of Integrity - City Bakery (317 - 6 Avenue SE)

Applicable Significance Criteria

This site is significant because...

Theme / Activity / Cultural Practice / Event

Yes



No

-The City Bakery, built in 1911, is valued as a component of a period of downtown Medicine Hat development occurring prior to the First World War, which built upon early periods of economic growth (**Theme Value - City Development in Medicine Hat**).

Institution / Person

Yes



No

-The City Bakery block is further valued for its connection with early Medicine Hat pioneer William Cousins. A shrewd businessman and civic leader, Cousins significantly shaped the development of Medicine Hat (**Theme Value – Oasis in the Prairies: Settling Medicine Hat**).

Design / Style / Construction

Yes



No

-The City Bakery is significant as a representation of Medicine Hat Edwardian era Classical Revival-style architecture, design by prominent local architect William T. Williams (**Theme Value – Built in Medicine Hat**).

Information Potential

Yes



No

Landmark / Symbolic Value

Yes



No

Period of Significance

1906 to 1913 Pre-First World War, Age of Optimism

Chronology of Alterations

Post 1950s - Storefront reconfiguration

Storefront canopy

Rear addition

2012/13 - Front façade painted

Aspects of Integrity

LOCATION

Yes



No



Not Applicable

The location of the building remains unchanged at 317 6th Street SE.

DESIGN

Yes



No



Not Applicable

The design of the building has not been altered overall, however the storefront has been reconfigured and original windows replaced.

ENVIRONMENT

Yes



No



Not Applicable

The building continues to be situated on a tree-lined street in Medicine Hat's historic commercial core.

MATERIALS

Yes



No



Not Applicable

The building's brick exterior was painted circa 2012/2013.

WORKMANSHIP

Yes



No



Not Applicable

The high quality of the workmanship of the building is evident in the building's current condition.

FEELING

Yes



No



Not Applicable

The building continues to convey a strong historic sense.

ASSOCIATION

Yes



No



Not Applicable

The building maintains its commercial association.

Statement of Integrity continued on next page...

Statement of Integrity - City Bakery (317 - 6 Avenue SE)

Statement of Integrity

City Bakery maintains all the aspects of integrity necessary for it to convey its significance / heritage value.

The City Bakery possesses a fair degree of architectural integrity with elements of its original form still intact. The original red brick exterior is in good condition; however, the brick has been painted. The visible unpainted original brick does not exhibit signs of spalling or mortar loss. The storefront has been reconfigured and the original windows and door replaced. The later added storefront canopy obscures the original wood and tin storefront cornice. The second storey of the front façade resembles its original Edwardian era design. The windows of the second storey have been replaced; however, the openings are intact. The original window openings on the north side of the building have been filled in. The stepped parapet with its arched banding is intact and in good condition. A one-storey addition was placed on the rear of the building in 19XX, and the interior of the building has been extensively renovated. The building's rear courtyard exhibits signs of pigeons roosting and steps should be taken to prevent the birds continuing to occupy this space and potentially attracting other pests.


Additional Images - City Bakery

The City Bakery in context with its neighbouring structures

Donald Luxton & Associates
April 2013



Heritage Evaluation Form - City Bakery (317 - 6 Avenue SE)

 Medicine Hat The Gas City Heritage Evaluation Form	Site Number	Category C
	Community District Downtown	
	Designation	

Site Name(s): City Bakery			
Municipal Address: 317 - 6 Avenue SE		Date of Construction:	Y 1911
Consultant(s): Donald Luxton & Associates Inc. Heritage Committee: Heritage Resource Committee Heritage Planner: Chris Reddy		Evaluation Date:	Y 13 M 05 D 17
			Total
			50

History (H)	E	VG	G	F	P		(H) SCORE
H.1 Associations/Patterns		X				20	30
H.2 Age		X				10	
Comments: H.1 The City Bakery block is valued as a component of a period of downtown Medicine Hat development occurring prior to the First World War. H.2 Constructed in 1911.							

Architecture (A)	E	VG	G	F	P		(A) SCORE
A.1 Style/Type/Design			X			10	5
A.2 Designer/Builder		X				10	
A.3 Construction Technology			X			5	
A.4 Interior Details					X	0	
A.5 Alterations				X		-20	
Comments: A.1 The City Bakery block is a significant representation of Medicine Hat Edwardian era Classical Revival-style architecture. A.2 Architect – William T. Williams, Contractor – M. Fulkan A.3 Building constructed using brick. A.4 Original interior elements and plan no longer evident. A.5 Brick exterior has been painted, original storefront reconfigured, and second storey windows replaced.							

Urban Context (C)	E	VG	G	F	P		(C) SCORE
C.1 Landmark/Character		X				10	15
C.2 Streetscape/Landscape			X			5	
Comments: C.1 The commercial style architecture makes the building readily identifiable. C.2 The building is a component of a grouping of early commercial buildings in Medicine Hat's historic commercial downtown.							